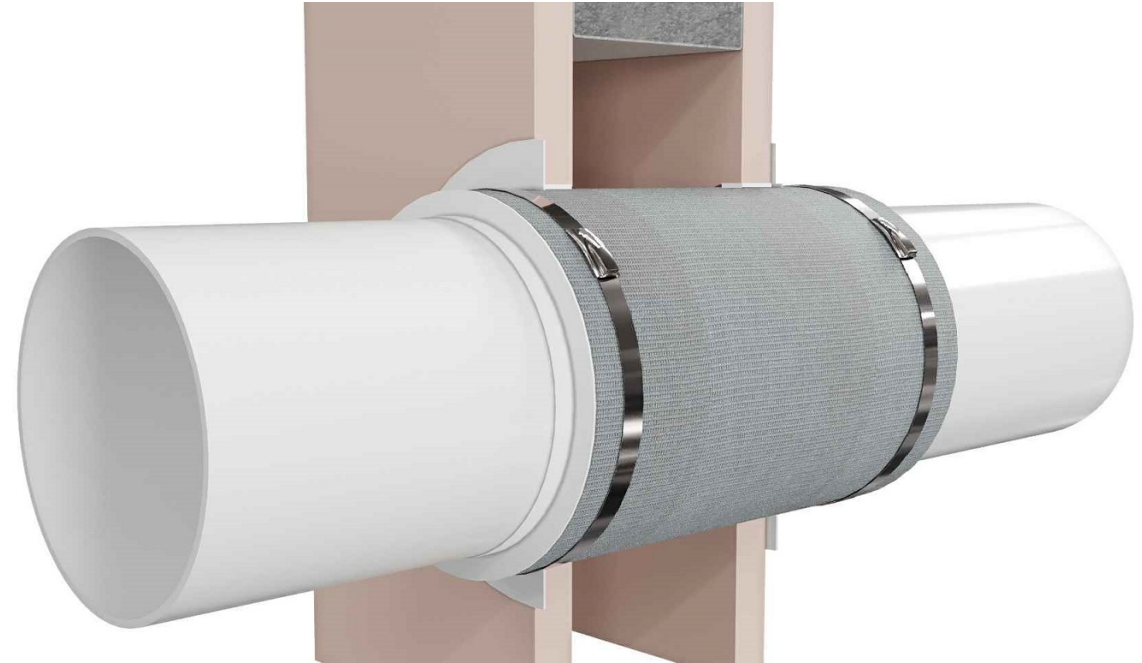




Step-by-step installation instructions:

1. Ensure the aperture is free from dust and debris.
2. Cut the necessary width of AGNI-Sleeve allowing 25mm both sides of the wall.
3. Insert AGNI-Sleeve through the aperture extending 25mm from both sides of the wall.
4. Secure AGNI-Sleeve around the pipe using AGNI-Strap from both sides of the wall.
5. Using AGNI-Seal, seal the joints between AGNI-Sleeve and the wall.
6. Apply 5mm AGNI-Seal bead at AGNI-Sleeve/pipe junction.



Technical Information

Substrate	<ul style="list-style-type: none"> • Min. 90mm timber or steel stud wall with a minimum of one layer of 13mm (or greater) FR plasterboard on each side, with or without insulation. • Min. 116mm concrete wall
Service range	DN 80mm up to 100 mm PVC-U pipe
Annular gap	4.5mm - 5.5mm
AGNI-Products	AGNI-Sleeve, AGNI-Strap, AGNI-Seal
Protection installation	From both sides of the wall

Compliance Information

Standards	AS1530.4-2014, AS4072.1-2005
FRR/FRL	-/60/60
Reference	PF24069 (AP-076)

Disclaimer
Agnitek reserves the right to modify product specifications without prior notice due to its ongoing research, development & certification programme. The information in this document is provided in good faith and is intended for guidance purposes only. Any accompanying drawings are solely for illustrative purposes. Since Agnitek cannot oversee installation methods or ensure site conditions, no warranties, expressed or implied, are intended regarding the products' actual performance. We do not accept liability for any loss, damage, or injury from using this information. Please take a look at the test reports displayed on a relevant AGNI-System webpage for all compliance specifics.



Agnitek

FIRE RATED TECHNOLOGY

8 Clare St Bayswater
VIC 3153, AUSTRALIA
www.agnitek.com.au

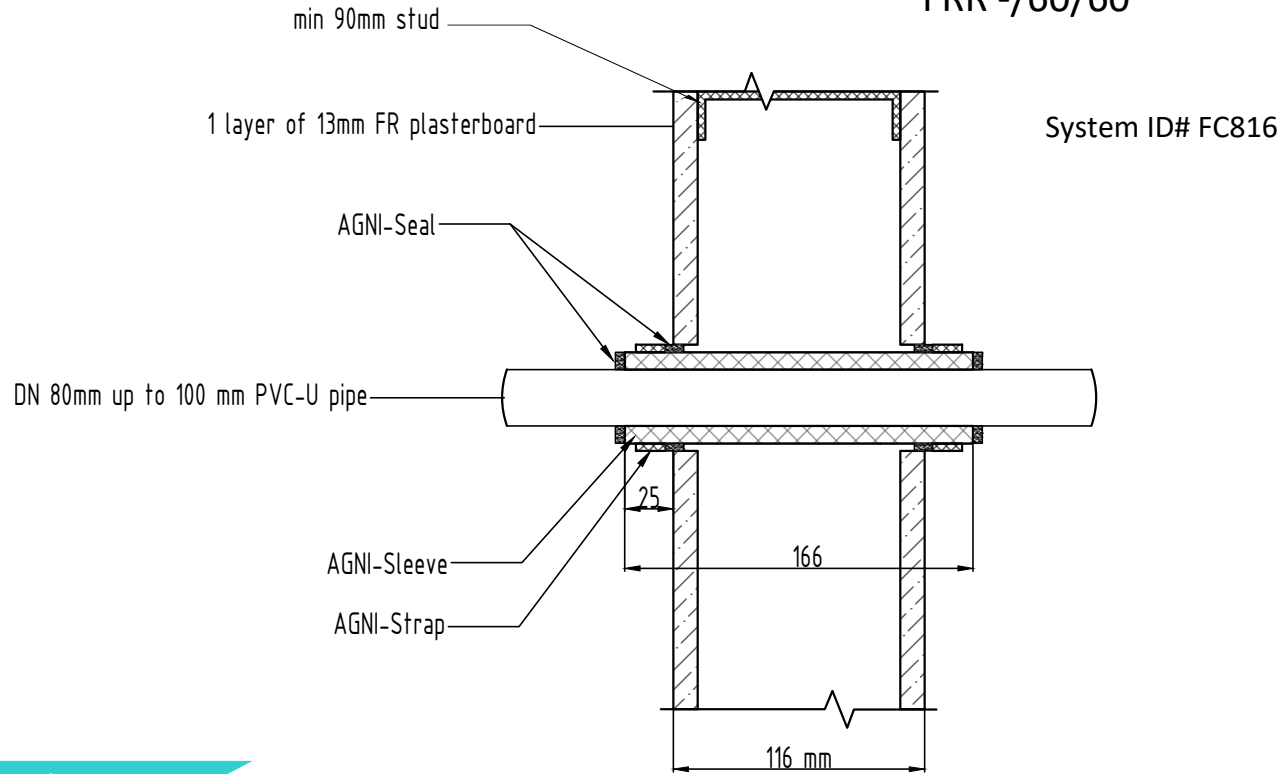
Date 18.07.2024



FIRESTOP CENTRE

Authorised New Zealand Distributor
Ph (09) 483 4000 www.firestopcentre.co.nz

AGNI-Sleeve in 1 x 13mm Pbd Wall or 116mm Concrete Wall 80-100mm PVC-U Pipe FRR -/60/60



Technical Information

Substrate	<ul style="list-style-type: none"> • Min. 90mm timber or steel stud wall with a minimum of one layer of 13mm (or greater) FR plasterboard on each side, with or without insulation. • Min. 116mm concrete wall
Service range	DN 80mm up to 100 mm PVC-U pipe
Annular gap	4.5mm - 5.5mm
AGNI-Products	AGNI-Sleeve, AGNI-Strap, AGNI-Seal
Protection installation	From both sides of the wall

Compliance Information

Standards	AS1530.4-2014, AS4072.1-2005
FRR/FRL	-/60/60
Reference	PF24069



Agnitek
FIRE RATED TECHNOLOGY

8 Clare St Bayswater
VIC 3153, AUSTRALIA
www.agnitek.com.au

Disclaimer
Agnitek reserves the right to modify product specifications without prior notice due to its ongoing research, development & certification programme. The information in this document is provided in good faith and is intended for guidance purposes only. Any accompanying drawings are solely for illustrative purposes. Since Agnitek cannot oversee installation methods or ensure site conditions, no warranties, expressed or implied, are intended regarding the products' actual performance. We do not accept liability for any loss, damage, or injury from using this information. Please take a look at the test reports displayed on a relevant AGNI-System webpage for all compliance specifics.

Date | 18.07.2024